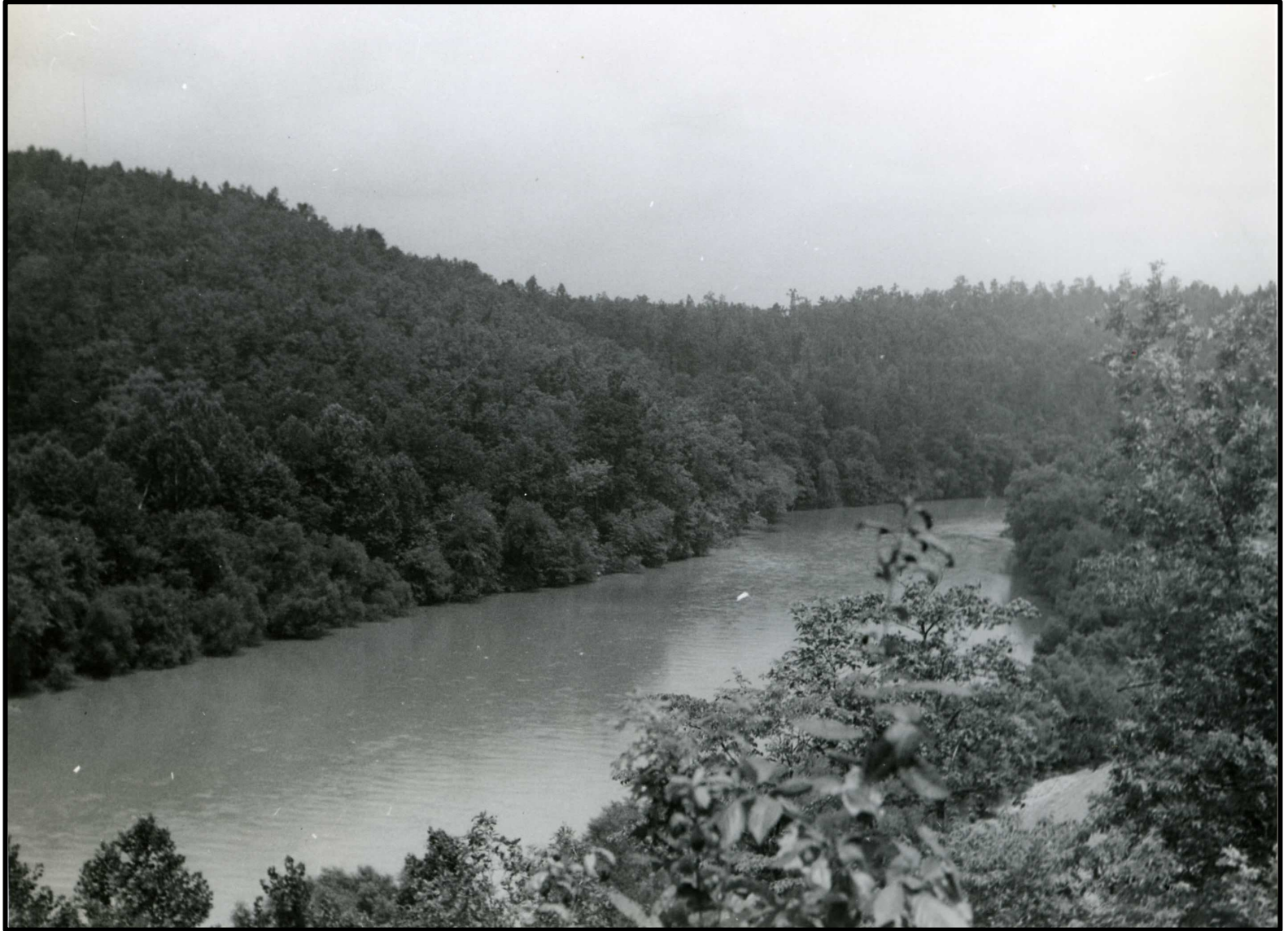


Picture This...



It early 1946 engineering contractors are conducting early surveys to determine the best site for Buford Dam. Core samples of granite were taken up and down the Chattahoochee River valley adjacent to the present site of Buford Dam. They had to be sure the site chosen for the dam would be able to support such a huge structure. *Courtesy U.S. Army Corps of Engineers, Mobile District.*

In 1946 the Gwinnett County side of the dam site (*upper left background*) was a serene wooded area adjacent to the slow moving Chattahoochee River. River flow is left to right and you are looking downstream. It is hard to imagine that within a decade the dam will be completed. It would forever change the area dramatically. *Courtesy U.S. Army Corps of Engineers, Mobile District.*





Recreation on Lake Lanier has become a major reason for the project's popularity. Although it was not a major reason for the dam's construction it became a major resource of the project in the 1980s. Had the development of the project taken place today, recreation would surely have taken on more importance.
Courtesy U.S. Army Corps of Engineers, Mobile District.

(L-R) In the late 1940s Division Engineer, Colonel Harding; Congressman James C. Davis; and Atlanta Mayor, William B. Hartsfield look at a model of Buford Dam. The Corps of Engineers relied heavily on the support of state and local officials in getting the early approval from Congress for the project to begin. The model remained in the powerhouse lobby for many years before being moved to the Northeast Georgia History Center in Gainesville, Georgia. *Courtesy U.S. Army Corps of Engineers, Mobile District.*

